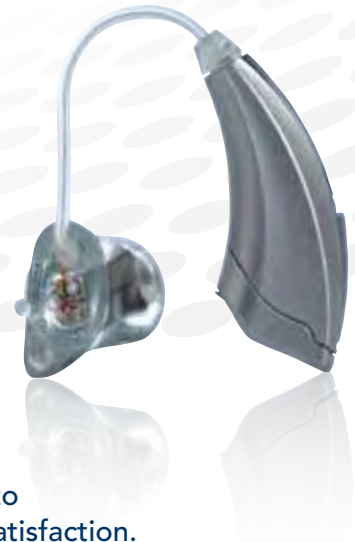


RIC Absolute Power

Receiver-In-Canal

11 • 9 • 7 • 5

Available with 60
or 71 gain receiver



At the heart of every S Series hearing instrument is Starkey's newest, state-of-the-art integrated circuit platform, Drive Architecture, designed to deliver maximum performance, maximum power, and maximum patient satisfaction.

Features

Sound Imaging

S Series 11

Optimal high-resolution sound imaging with frequency shaping in all 16 channels and 16 bands

S Series 9

High-resolution sound imaging with frequency shaping in 12 channels and 12 bands

S Series 7

Frequency shaping in 8 channels and 8 bands

S Series 5

6 channels and 6 bands

PureWave Feedback Eliminator

- Provides best-in-class feedback cancellation
- When fit open, S Series has the widest fitting range and usable high-frequency bandwidth of any open fit instrument in its class

Acoustic Scene Analyzer

Continuously scans the environment and adapts appropriately for maximizing performance in noise and preserving speech recognition

AudioScape

In addition to superior directionality, Starkey's new acoustic pattern recognition system, AudioScape, with patented, real-time environment detection and classification, adapts to any listening environment by seamlessly adjusting to the patient's preferred settings

Comfort Control

Available on S Series 11

Allows you to work with your patients to set the system based on their specific needs – resulting in a more comfortable, personalized listening experience

InVision Directionality

- Automatically adapts to ensure optimal performance in all listening situations
- S Series boasts the highest mean DI scores and the lowest operational noise floor, helping patients significantly increase their understanding in noise

T² (Touch-Tone)

Adjustment for volume and memory via any cell or touch-tone telephone

Self Check

Available on S Series 11

Allows hearing professional and patient to perform a diagnostic check of the microphone, circuit and receiver

Reminder

Available on S Series 11

Offers hearing professionals the option of programming audible voice or tone reminders for follow-up appointments and maintenance checks

Leisure Listening Memories

TV memory program designed for optimal performance while watching television

Available on S Series 11

Multiple music genre settings designed to maximize sound quality and listening enjoyment

Automatic Telephone Solutions

Automatically detects telephone use and adjusts to the optimal telecoil frequency response for telephone listening. Manually switched telecoil may be used for loop systems

Voice Indicators

Available on S Series 11

Alerts patients to the status of their hearing aid, low battery, memory and telephone modes in their choice of male or female voices in a wide variety of languages

Tonal Indicators

Unique tones for memory, low battery, etc.

Auto Path

- Automatic fitting routine
- Provides an accurate and efficient first fit

Live 3D Speech Mapping

Available on S Series 11

- Allows hearing professional to verify how the hearing aid processes speech, or any live acoustic input, in real time
- 3D display engages patient and family in fitting process

Live Speech Mapping

Available on S Series 11/9/7/5

Verifies hearing aid's processing of speech, or any live acoustic input, in real time

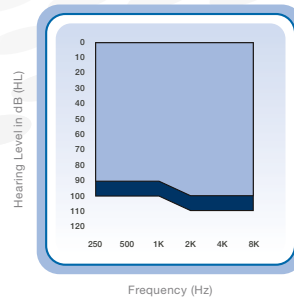
Verify Comfort

In-Situ Audiometry

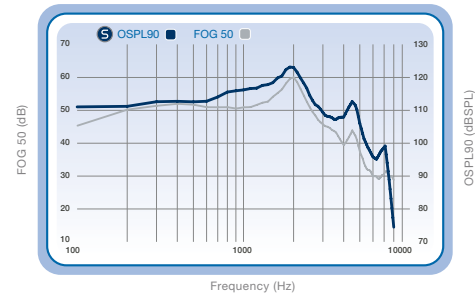
Data Logging

S Series RIC Absolute Power ANSI/IEC Data

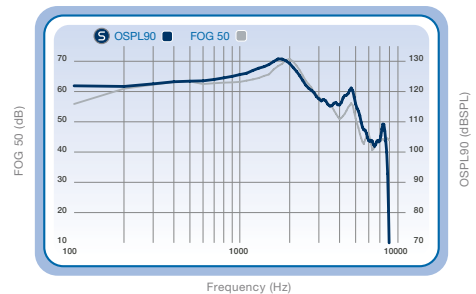
Measurement	60 Gain Data		71 Gain Data	
	ANSI/IEC 2cc Coupler	IEC OES Coupler	ANSI/IEC 2cc Coupler	IEC OES Coupler
Peak OSPL90 (dB SPL)	123	130	131	139
HFA OSPL90 (dB SPL)	115	NA	125	NA
RTF OSPL90 (dB SPL)	NA	127	NA	136
Peak Gain (dB)	60	69	71	79
HFA Full-On Gain (dB)	52	NA	64	NA
RTF Full-On Gain (dB)	NA	63	NA	75
Frequency Range (Hz)	100 - 5400	NA	100 - 5300	NA
Reference Test Frequency (kHz)	NA	1.6	NA	1.6
HFA Frequencies (kHz)	1.0, 1.6, 2.5	NA	1.0, 1.6, 2.5	NA
Reference Test Gain (dB)	39	52	48	61
Harmonic Distortion				
500 Hz (%)	<3	<3	<3	<3
800 Hz (%)	<3	<3	<3	<3
1600 Hz (%)	<3	<3	<3	<3
Equivalent Input Noise (dB SPL)	<25	<25	<25	<25
Attack and Release Time (ANSI/IEC) – Test Mode				
Attack Time (ms)	15	15	15	15
Release Time 0.1s (ms)	5-150	5-250	5-150	5-250
Release Time 2.0s (ms)	5-150	5-250	5-150	5-250
Induction Coil Sensitivity				
HFA SPLITS (ANSI) (dB SPL)	99	NA	108	NA
MASL (IEC) (dB SPL)	NA	93	NA	105
ANSI/IEC Battery Current (mA)	1.2	1.2	1.6	1.6
Idle Current (mA)	1.1	1.1	1.3	1.3
Estimated Battery Life for 16-Hour Day				
312 Zinc Air (days)	6-9	6-9	4-7	4-7



S Series RIC AP 60 (light blue),
S Series RIC AP 71 (dark blue)
fitting ranges.



OSPL90 (blue) and Full-On Gain (gray) curves for
the S Series RIC AP at 123/60.



OSPL90 (blue) and Full-On Gain (gray) curves for
the S Series RIC AP at 131/71.

Measurement Conditions and Recommendations

The data for S Series are obtained and performance is expressed according to ANSI S3.22 (2003), ANSI C63.19 (2007), IEC 60118-7 (2005) and IEC 60118-0 (1983) with Amendment 1 (1994-01). The Starkey proprietary Real Time Analyzer and the Starkey Automated Design Verification Test System (SADVTS) comprise the basic test equipment. Data may be subject to change with product refinement.

Because of the adaptive signal processing capabilities of S Series hearing instruments, the hearing instrument must be set to test mode to compare the actual performance of the hearing instrument with these specifications. S Series hearing instruments may be set to test mode with Inspire by reading the hearing aid and selecting the "Hearing Aid Test" screen from the menu on the left side of the Inspire window, then selecting the "Full on Gain" button.

RF IMMUNITY LEVEL: These hearing instruments have a cell phone immunity rating of M3/T3. For your cell phone to be compatible with these hearing instruments, the cell phone should have an immunity rating of M2 or higher for normal use according to ANSI ratings. Please consult your cell phone specifications for your cell phone immunity rating.