

QuickTIPS



USER CONTROLS

PRODUCT AVAILABILITY: Muse, Halo 2 and SoundLens Synergy Wireless Devices

Launch **Inspire X**, then connect and detect hearing devices. Refer to the **Muse Initial Fitting Protocol QuickTIP** or the **Halo 2 Initial Fitting Protocol QuickTIP** for information.

The User Control Configuration demo box will appear upon first fitting with Inspire X. Select **Show Demo** for demonstration of user control configuration options, or select **Don't show again** and **Close**. Select **User Controls** on the left navigation bar to adjust user controls at subsequent fittings.

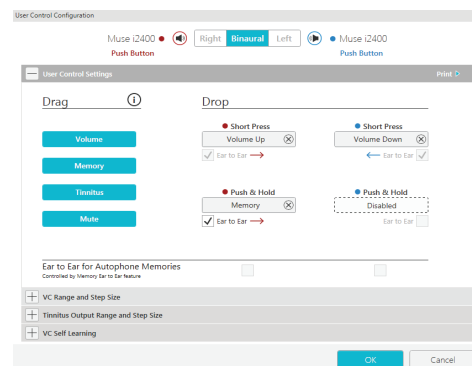
The rocker switch user control is compatible with any other Synergy product user control, such as the rotary volume wheel or push button control during programming in the Inspire X software.

NOTE: This is only the case for Synergy products. It is not backwards compatible.

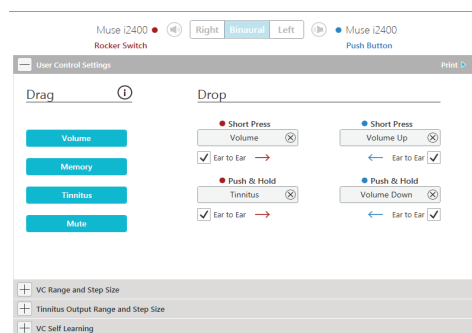
Wireless hearing devices feature Ear to Ear synchronized user adjustments.

USER CONTROL CONFIGURATION

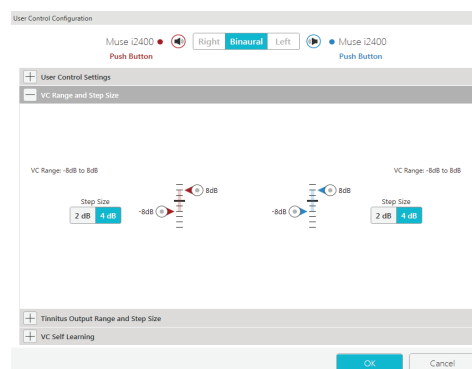
1. Drag any **user control** you wish to enable from the left and drop it on a **gesture** on the right. User control options include:
 - » Volume
 - » Memory
 - » Tinnitus
 - » Mute
 - » Balance Control (Muse BiCROS devices only)**NOTE:** An alert icon will appear if the Tinnitus user control is enabled but the tinnitus stimulus feature is disabled. Refer to the **Tinnitus QuickTIP** for additional information on enabling the tinnitus stimulus.
2. Select **gesture functionality**. If fitting a device with a push button, default gesture options include:
 - » Right Increase, Left Decrease
 - » Right Increase and Decrease
 - » Left Increase and Decrease
 - » Sprinkler Decrease**NOTE:** Select **Preferences**, then **General** to display additional user control options, if desired.



User Control Configuration: Push Button



User Control Configuration: Push Button and Rocker Switch



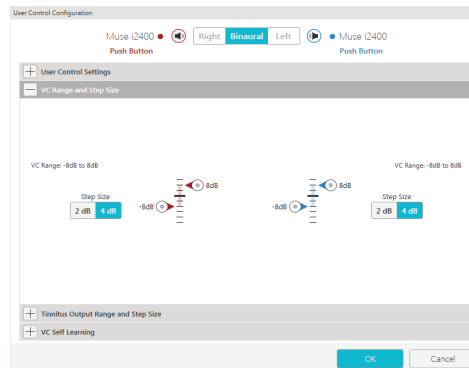
VC Range and Step Size

VOLUME CONTROL RANGE AND STEP SIZE

1. Select **VC Range and Step Size**, if volume control is enabled.
2. Select **pins** to adjust VC Range.
3. Select **Step Size** of 2dB or 4dB.
NOTE: Inspire software will not allow for adjustments to VC Range and Step Size if volume control is not enabled in User Control Settings.

TINNITUS OUTPUT RANGE AND STEP SIZE

1. Select **Tinnitus Output Range and Step Size**, if tinnitus stimulus is enabled. Refer to the *Tinnitus QuickTIP* for additional information.
2. Select **pins** to adjust stimulus level for Tinnitus Output Range.
3. Select **Step Size** of 2dB or 4dB.
NOTE: Inspire software will not allow for adjustments to Tinnitus Output Range and Step Size if tinnitus control is not enabled in User Control Settings.



Tinnitus Output Range and Step Size

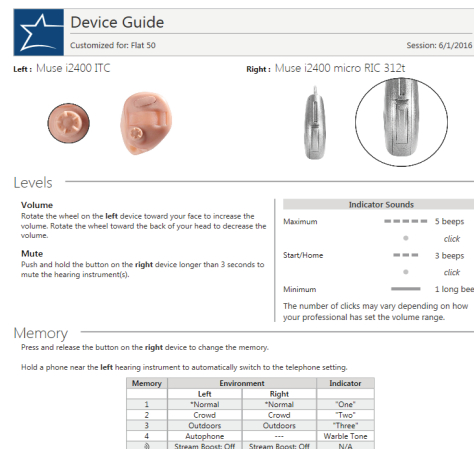
VC SELF LEARNING

1. Select **VC Self Learning**, then select **Automatic** to enable Self Learning, if desired.
NOTE: Self Learning will only operate if a volume control is enabled. It cannot be enabled at the same time as Auto Experience Manager. Self Learning defaults OFF.

Self Learning will learn a patient's volume control preferences and will automatically make no greater than 2dB changes at a time based on a patient's adjustments over a 12 hour learning period.

PATIENT CONTROLS GUIDE

Select **Print** in User Control Settings to print or preview the Patient Controls Guide. This generates a report with user control information specific to the connected devices.



Patient Controls Guide