

## HALO PROGRAMMING AND INITIAL FIT PROTOCOL

**PRODUCT AVAILABILITY:** Halo RIC 13 and BTE 13: i110, i90, i70

Halo programming must be completed prior to connecting the Halo devices to the Apple or Android device. Halo devices may be programmed wirelessly or non-wirelessly.

### SETUP FOR WIRELESS PROGRAMMING

Expected range for wireless programming is 30 feet.

1. Turn **Bluetooth OFF** on Apple or Android devices.
2. Insert fresh **battery** into Halo devices and close battery doors.
3. Connect **TruLink programmer** to fitting computer via USB cable.
4. Follow on-screen instructions to **install TruLink programmer**.
5. Launch **Inspire 2015.1** or later.
6. Ensure TruLink programmer is detected on the **Get Started** page. To detect, select the **programmer icon** in the bottom right corner, select **View Programmers**, then select **Search** to locate the TruLink programmer.
7. Ensure Halo devices are detected, then select the **check boxes** next to the correct devices.

### SETUP FOR NON-WIRELESS PROGRAMMING

1. Turn **Bluetooth OFF** on Apple or Android devices.
2. **Connect** Halo devices to the SpeedPort, HiPro, or NOAHLINK using programming cables and flex strips.  
NOTE: Battery door should remain open while programming.
3. Ensure **non-wireless programmer** is detected on the Get Started page. To detect, select the **programmer icon** in the bottom right corner, select **View Programmers**, then select **Search** to locate the correct programmer.
4. Ensure Halo devices are detected, then select the **check boxes** next to the correct devices.

A hearing aid engineered to connect directly to your patient's Apple and Android devices via our TruLink app.

#### APPLE:

Supported Apple devices for use with Halo and TruLink 2.1 application currently include:

iPhone 4s, 5, 5s, 5c, 6, 6 Plus  
iPad 4, iPad mini, iPad Air, iPad Air 2  
iPod Touch 5th generation or newer

Compatible with iOS 8.4, 8.3, 8.2, 8.1, 8, 7.1, 7.1.1 and 7.1.2.

#### ANDROID:

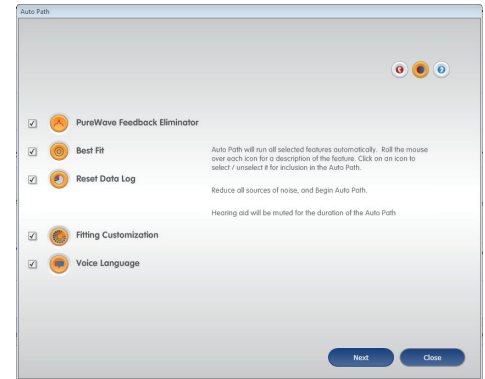
Supported Android devices for use with TruLink application currently include:  
Samsung Galaxy S6, S5, and S4;  
Samsung Galaxy Note 4 and Note 3; HTC One M8 and One M7.

For the most up-to-date Android compatibility information, visit [TruLinkHearing.com](http://TruLinkHearing.com)

NOTE: Audio Streaming is not currently available for Android devices.

## GETTING STARTED WITH AUTO PATH

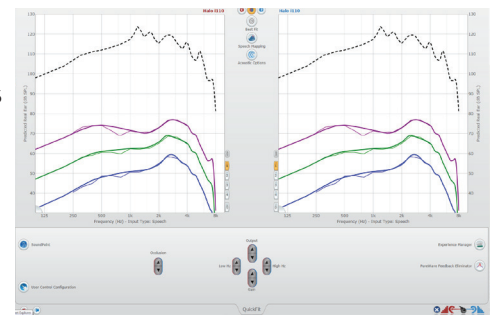
1. On the **Get Started** screen select **New Session**, then select **Start**.  
**NOTE:** Auto Path will default to launching automatically for hearing aids that have not been previously read by Inspire. Auto Path provides an easy method of completing an initial fitting in a short time period.
2. Ensure all boxes are selected on the Auto Path screen and icons are highlighted in orange, then select Next.
3. Select the appropriate **Acoustic Options** if prompted, then select **Begin**. Ensure the Receiver Matrix and Acoustic Options selections in Inspire match the device configuration to accurately reflect the frequency response.
4. Change the **Voice Language** (if applicable), then select Next.
5. Review the Auto Path results screen. Select **Restart** if Status is Incomplete for any steps.
6. Select the desired **Experience Level**, then select Close.



Auto Path for Halo BTE 13

## QUICKFIT

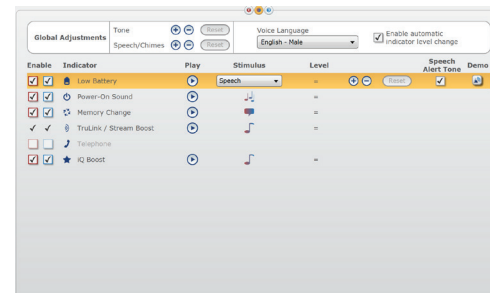
1. Select the **Output, Gain (Low Hz, High Hz, Gain)** and **Occlusion** controls on the bottom panel to make frequency response adjustments as needed.
2. Select **Memory** tabs on the frequency response to assign memory environments.  
**NOTE:** All products can be programmed with up to 4 enabled memories.
3. Make any necessary adjustments to **Experience Manager, PureWave Feedback Eliminator, and User Control Configuration** (if Halo BTE 13) via the QuickFit screen. Refer to the **Auto Experience Manager: Automatic Acclimatization QuickTIP** available via Inspire Online for additional information regarding Auto Experience Manager.



QuickFit

## INDICATORS

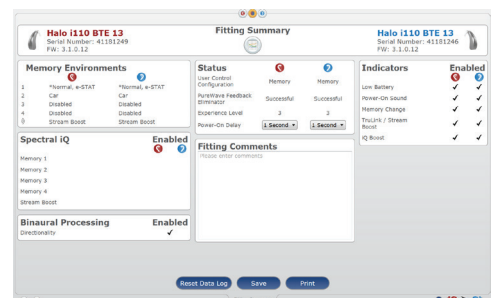
1. Select **Indicators** on the left navigation bar.
2. Select boxes to enable additional indicators.
3. Select the + or - for **Tones** and/or **Speech/Chimes** under **Global Adjustments** to make level changes for all indicators.
4. Select desired **Voice Language** from the dropdown menu.
5. Select an **Indicator** icon to adjust individual indicators:
  - » Select the **Play** icon to hear indicator through hearing aids.
  - » Select the **Speaker** icon to hear indicator through the computer speakers.



Indicators for Halo BTE 13

## FITTING SUMMARY

1. Select **Fitting Summary** on the left navigation bar.
2. Select feature names to change status of features if necessary. **Hyperlinks** will navigate to the adjustment screens.
3. Type patient information in the **Fitting Comments** box.
4. Select **Print** to generate a one page printed report.
5. Select **Save** to store fitting data in patient database record.



Fitting Summary