

# Starkey Hearing Technologies Remote

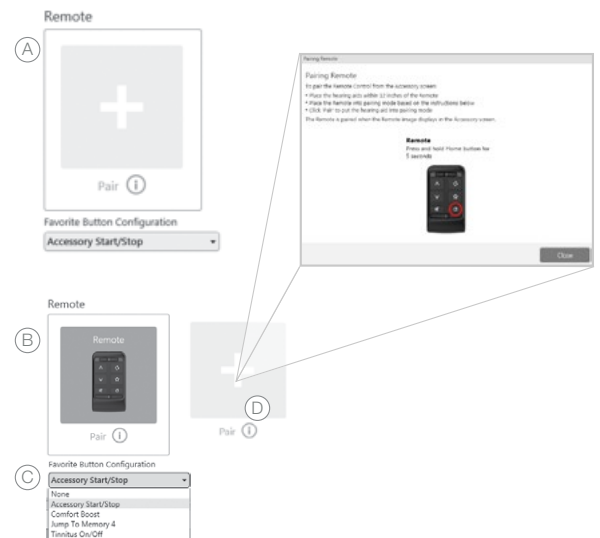


## Pairing

The 2.4 GHz Remote must be paired to interact with compatible 2.4 GHz hearing aids on the Thrive platform. Pairing occurs once, then the hearing aids and Remote will automatically recognize each other. The Remote can be paired within Inspire X or outside of Inspire X. Compatible 2.4 GHz hearing aids on the Thrive platform can be paired with one Remote.

### Pairing within Inspire X

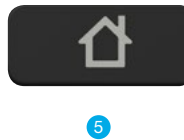
- 1 Launch Inspire X, connect and detect hearing aids.
- 2 Select **Accessories** on the left navigation bar.
- 3 Ensure the Lock switch is in the Unlock (left) position.
- 4 Place the hearing aids within 12 inches of the Remote.
- 5 Place the Remote in pairing mode by pressing the Home button for 5 seconds. Both LEDs will rapidly blink.
- 6 Select **Pair** to put the hearing aids into pairing mode (A).
- 7 Pairing is successful when the remote image displays on the accessory screen (B).
- 8 Use the drop-down menu below the remote image to set "Favorite Button Configuration" (C).
- 9 Select the information icon for pairing instructions if needed (D).










## Pairing (Continued)

### Pairing outside of Inspire X

- 1 Power off any mobile phone or other accessories that were previously paired with the hearing aids.
- 2 Ensure the Lock switch is in the Unlock (left) position.
- 3 Power off, then power on the hearing aids to place in pairing mode.
- 4 Place the hearing aids within 12 inches of the Remote.
- 5 Press the Home button for 5 seconds. Both LEDs will rapidly blink.
- 6 Once the left and right LEDs turn solid blue/red for 2 seconds, both devices are paired. The Remote will recognize if the fitting is monaural or binaural and pair one or two devices accordingly.



## Use

-  **Ear Selection Switch:** Position in the center for binaural adjustments. Slide to the right or left for ear-specific adjustments.
-  **Volume:** A short press of the arrows increases/decreases hearing aid volume and a long press of the arrows increases/decreases streaming volume. Streaming volume changes occur when streaming audio from any of the 2.4 GHz streaming accessories and will have no effect on iOS stream.
-  **Mute:** Press to temporarily turn off sound from the hearing aids. Press again to unmute.
-  **Memory:** Cycles through all Inspire X-programmed memories.
-  **Home:** Returns hearing aids to power-on volume and memory settings. Press and hold for 5 seconds to enter pairing mode.
-  **Unlock:** Unlock to make remote adjustments, Lock to prevent unintentional changes and to preserve battery life.
-  **Favorite Button:** Activates associated Favorite button configuration. The Favorite button is configured within Inspire X, and available options may include:
  - None:** No effect on the hearing aids.
  - Stop/Start Audio Stream:** Start or stop audio streaming from a 2.4 GHz streaming accessory.
  - Comfort Boost:** Press to optimize sound quality in noisy environments. Press again to deactivate this feature.
  - Jump to Memory 4:** Moves the hearing aids to memory 4.
  - Tinnitus Stimulus On/Off:** Start or stop tinnitus stimulus in the hearing aids.

<sup>1</sup>Accessories only pair to hearing aid (not to iPhone/app). <sup>2</sup>Double Tap feature only available on AI products.

iOS is a trademark or registered trademark of Cisco in the U.S. and other countries and is used under license.

The Starkey logo, Thrive, Starkey Hearing Technologies and Inspire are trademarks of Starkey Laboratories, Inc.

© 2019 Starkey. All Rights Reserved. 12/19 FLYR3470-01-EE-SG