

# Self Check

Self Check performs a diagnostic test of the hearing aid system to ensure optimal performance of the hearing aid components including microphones, receiver, circuit and sensors. Self Check can be initiated by the hearing professional within Inspire® X or by the user in the Thrive™ Hearing Control app.

## Establishing a Baseline

To use Self Check, a baseline must be established within Inspire X.

- 1 Select **Patient Tools** from the left navigation bar. [Fig. 1]
- 2 Place hearing aids on a flat surface with the receiver facing up.
- 3 Reduce all sources of noise.
- 4 Click **Set Baseline** to begin. [Fig. 1]
- 5 A brief, robust stimulus will play in each hearing aid.
- 6 A green check mark for each component indicates the baseline was established. [Fig. 2]

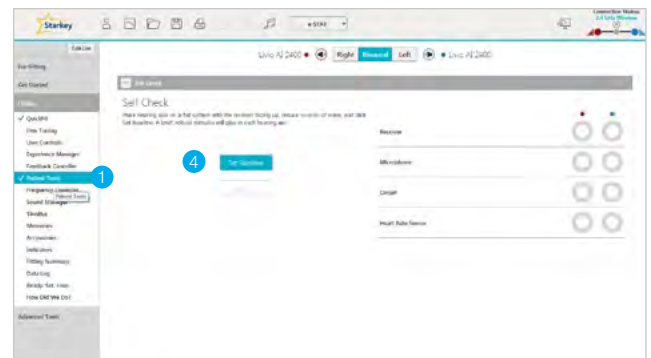


Figure 1

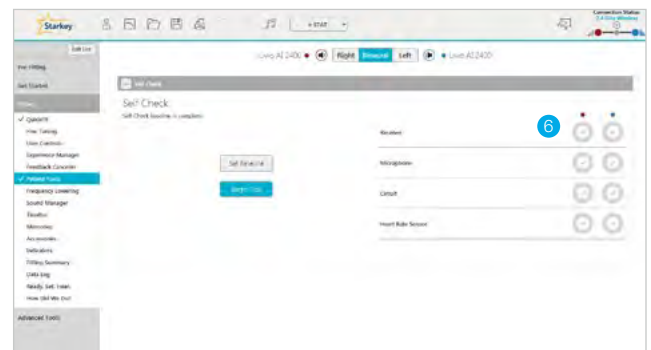


Figure 2

## Initiating Self Check within Inspire X

- 1 Select **Patient Tools** from the left navigation bar.
- 2 Place hearing aids on a flat surface with the receiver facing up.
- 3 Reduce all sources of noise.
- 4 Click **Begin Test** to begin.
- 5 A brief, robust stimulus will play in each hearing aid.



# Self Check Results

Once the test is complete, results for each hearing aid component display on the screen. Hover over the results for more information. [Fig. 3]

- (A) **Green:** Pass
- (B) **Yellow:** Not performing to baseline. Check component.
- (C) **Red:** Fail

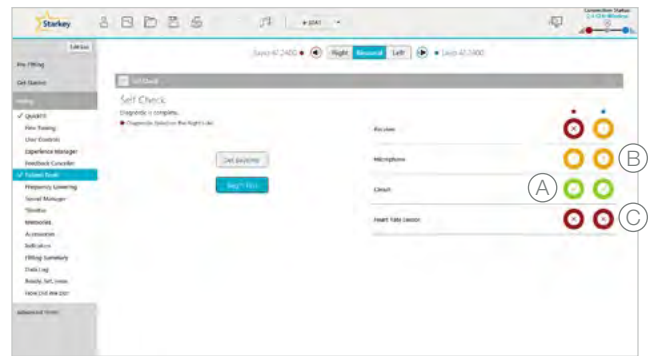


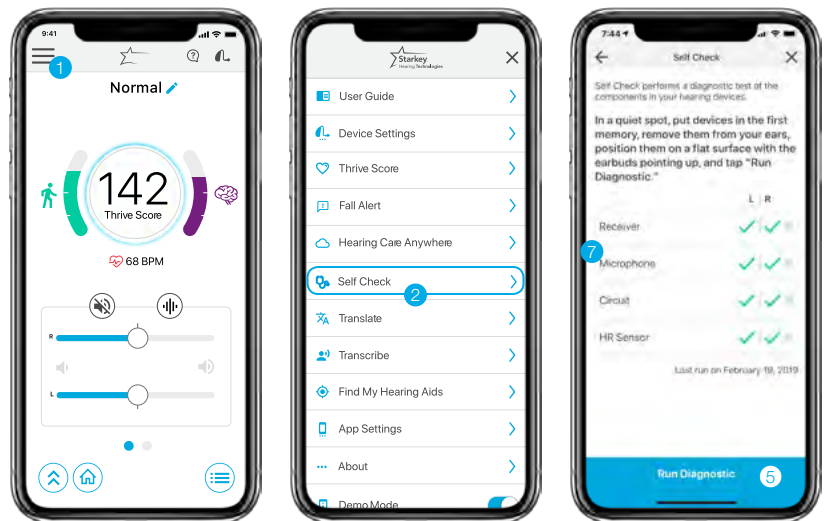
Figure 3

# Self Check in the Thrive App

Self Check provides a quick, convenient way for patients to analyze their hearing aid system's performance right from the Thrive app.

To initiate Self Check in the Thrive app:

- 1 Tap the **Settings** menu.
- 2 Tap **Self Check**.
- 3 Place hearing aids on a flat surface with the receiver facing up
- 4 Reduce all sources of noise.
- 5 Select **Run Diagnostic** button.
- 6 A short, loud tone will play in each hearing aid.
- 7 Once the test is complete, results for each hearing aid component display on the screen.
- 8 Tap each component for more information.



Component screen examples displayed below.

