

## MUSE IQ AND SOUNDLENS SYNERGY IQ INITIAL FIT PROTOCOL

**PRODUCT AVAILABILITY:** Muse iQ and SoundLens Synergy iQ Devices

### GET STARTED

1. Launch **Inspire X**.
2. On the **Get Started** screen, select **View Programmers**, then choose the appropriate programmer and select **OK**.
3. Connect hearing devices to the fitting computer via the appropriate programming accessories. Refer to the **Cables and Connectors Guide** located under **Help** in Inspire for additional information regarding connecting the hearing devices.  
**NOTE:** If you are fitting a standard device on the right ear, select **Assign Right** to designate a hearing device for the right ear.
4. Select the **check box** next to the hearing device(s) to be programmed.
5. Select **Read Device Settings** to begin a new fitting or for a follow-up fitting session using the current settings in the hearing devices, or **Load a Previous Session** to retrieve a previously saved session, then select **Start**.

### INITIAL FIT AND AUTO PATH

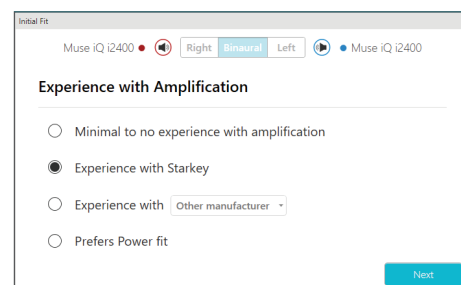
Initial Fit launches automatically when programming new hearing devices.

1. Select the appropriate **Acoustic Options** if programming standard devices, then select **OK**.
2. Select the appropriate **Experience with Amplification**. Refer to the **Experience Manager QuickTIP** for additional information.
3. Insert hearing devices into the patient's ears, reduce all sources of noise, then select **Begin** to run the Auto Path.  
**NOTE:** If hearing device programming is conducted prior to the fitting appointment, re-run the Feedback Canceller with the hearing devices in the patient's ears.
4. Review the Auto Path results screen. Select **Restart** if Status is Incomplete for any steps, or select **Close** to continue.

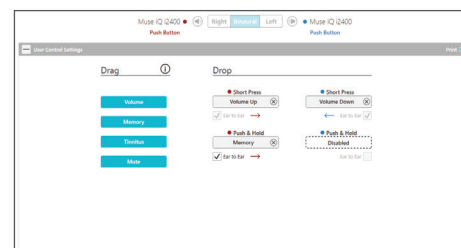
### USER CONTROLS

The User Control Configuration demo box will appear upon initial programming of devices with user controls. Select **Show Demo** for demonstration of user control configuration options, or select **Don't show again** and **Close**. Refer to the **User Controls QuickTIP** for additional information.

Our Synergy platform is at the heart of Muse iQ and SoundLens Synergy iQ. Devices feature twin compression architecture, ear to ear phone streaming, Acuity Immersion Directionality, Spatial Hearing (CIC and IIC devices only), tinnitus stimulus on all devices, and wireless connectivity to SurfLink accessories.



Experience with Amplification



User Controls

## QUICKFIT AND FINE TUNING

- » Select **QuickFit** on the left navigation bar to make global fitting adjustments.
- » Select **Fine Tuning** on the left navigation bar or from the bottom of the QuickFit screen to make detailed fitting adjustments of individual channels and input levels.
- » Refer to the *QuickFit and Fine Tuning QuickTIP* for additional information.



QuickFit and Fine Tuning

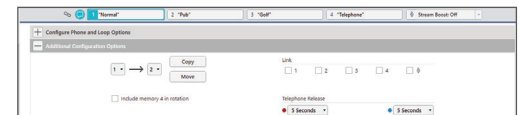
## ADDITIONAL ADJUSTMENTS

Refer to the *QuickTIP* library for information on various features, such as Environment Manager, Tinnitus, and Frequency Lowering.

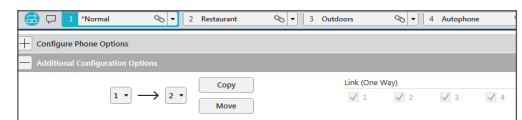
## MEMORIES AND SPEECH INDICATORS

Select **Memories** on left navigation bar or select **Memories** from the middle of all fitting screens.

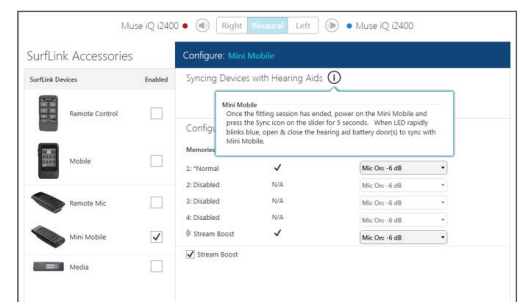
1. Select **drop-down arrows** to extend the Memories menu, then select the desired memories to program.
2. If configuring a **Music Memory**, refer to the *Music Memory QuickTIP*.
3. If enabling a **Telephone, Autophone, Telecoil, Autocoil, or Loop Memory**, select **Configure Phone and Loop Options** from the Memories screen. Refer to the *Phone Solutions QuickTIP* for additional information.
4. Speech Indicators can be customized (see *Indicators* below). The memory bar will default to a display of the selected environment (for example, "Outdoors"). Select the **speech bubble** to change the display to the speech indicator that has been configured (for example, the Outdoors memory will display as "Golf").
5. Select the **link icon** on the memory bar to link all memories. To link specific memories automatically to memory 1, select **Preferences**, then **General**, then enable **One-Way Memory Linking**. When enabled, modifications to the fitting curves made in memory 1 will be applied to the linked memories, while modifications to the linked memories will not be applied to any other memories.



Speech Bubble for Speech Indicators



One-Way Memory Linking



SurfLink Accessories

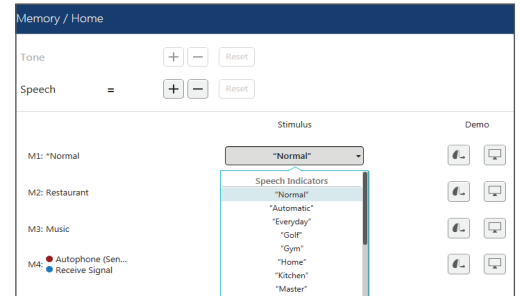
## ACCESSORIES

Select **Accessories** on the left navigation bar to configure SurfLink accessories. Refer to the *SurfLink QuickTIPs* for additional information.

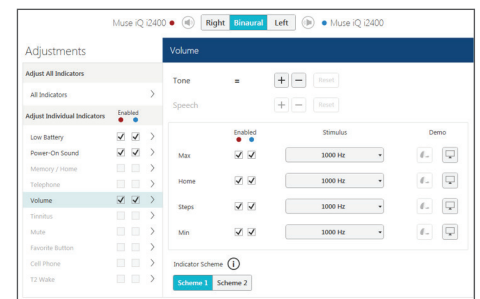
## INDICATORS

Select **Indicators** on the left navigation bar.

1. Select or de-select **check boxes** to enable or disable indicators.  
**NOTE:** Volume indicators may be enabled or disabled on an individual basis.
2. Select **Adjust All Indicators** to increase or decrease volume level for all Tone or Speech/Chimes indicators in 5 dB increments, or to change the voice language.
3. Select the **Individual Indicator names** to adjust the volume level and stimulus type for individual indicators, then select **Play** to play indicator directly through devices or **Demo** to play indicator through loudspeaker for demonstration purposes.
4. Select **Memory/Home** to configure **Speech Indicators**, which are environment-specific voice indicators. As memories are enabled, the default indicator will match the selected environment (for example, the user will hear "Outdoors" when switching into the Outdoors memory). Select the drop-down arrow under Stimulus to change the speech indicator (for example, the user has the option to hear "Golf" when switching into the Outdoors memory).
5. If enabling a volume control on devices with a user control, select the desired **Indicator Scheme**. Select the information icon to view a description of the different indicator schemes.  
**NOTE:** Devices will default to Scheme 1.



Speech Indicators



Indicator Schemes

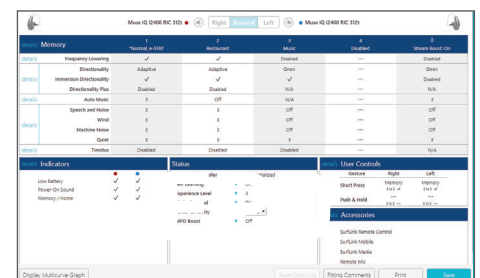
## FITTING SUMMARY

Select **Fitting Summary** on the left navigation bar.

1. Select **feature names** to change the status of features, if necessary. Feature names are hyperlinks and will navigate to the adjustment screens.
2. Select **Print** to generate a Fitting Report, a Data Log report, or a personalized Device Guide that displays the volume adjustments, memories, and Speech Indicators that have been enabled.

## READY.SET.HEAR

Ready.Set.Hear is a one-year triggered email program designed to help new patients successfully transition into their new hearing devices. Contact your Marketing Representative for additional information.



Fitting Summary