

MUSE IQ RECHARGEABLE INITIAL FIT PROTOCOL

PRODUCT AVAILABILITY: Muse iQ Rechargeable Devices

INITIAL SETUP/CHARGING

1. Muse iQ Rechargeable hearing aids can only be programmed wirelessly via the SurfLink Programmer. Hearing aids will ship with enough battery life to complete initial hearing aid programming, but not enough for a full day of use.
2. Place hearing aids in the Synergy Charger for 3 hours prior to the initial fitting to ensure the patient will have battery life to last the rest of the day.

NOTE: If the hearing aid battery charge is too low, a low battery warning will appear when reading hearing aids. If this occurs, the fitting session can proceed, but a firmware update (if available) cannot. Fifteen minutes in the Synergy Charger is enough to proceed with a firmware update.

Our Synergy platform is at the heart of Muse iQ R. Muse iQ R features twin compression architecture, ear to ear phone streaming, Acuity Immersion Directionality, tinnitus stimulus, and wireless connectivity to SurfLink accessories.

GET STARTED

1. Launch Inspire X.
2. On the Get Started screen, select View Programmers, then choose the SurfLink wireless programmer and select OK.

NOTE: Expected range for wireless programming is 30 feet.

3. Select the check box next to the hearing aids to be programmed. Refer to the *CROS/BiCROS QuickTIP* for additional information regarding fitting a CROS or BiCROS system.
4. Select Read Device Settings to begin a new fitting or for a follow-up fitting session using the current settings in the hearing aids, or Load a Previous Session to retrieve a previously saved session, then select Start.

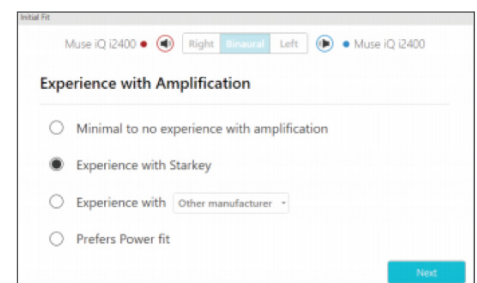
INITIAL FIT AND AUTO PATH

Initial Fit launches automatically when programming new hearing aids.

1. Select the appropriate Acoustic Options, then select OK.
2. Select the appropriate Experience with Amplification. Refer to the *Experience Manager QuickTIP* for additional information.
3. Insert hearing aids into the patient's ears, reduce all sources of noise, then select Begin to run the Auto Path.

NOTE: If hearing aid programming is conducted prior to the fitting appointment, re-run the Feedback Canceller with the hearing aids in the patient's ears.

4. Review the Auto Path results screen. Select Restart if Status is Incomplete for any steps, or select Close to continue.



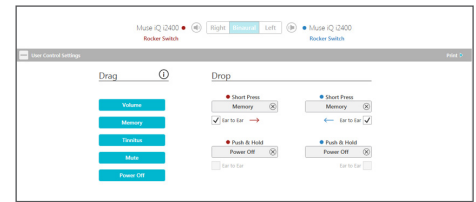
Experience with Amplification

USER CONTROLS

The User Control Configuration demo box will appear upon initial programming of hearing aids with user controls. Select Show Demo for demonstration of user control configuration options, or select Don't show again and Close. Refer to the *User Controls QuickTIP* for additional information.

1. Muse iQ R does not have a battery door. To provide patients with the ability to power down their Muse iQ R hearing aids while not in use, the Push & Hold user control can be configured to function as a "Power Off" option.
2. Muse iQ R hearing aids will ship with the "Power Off" user control defaulted ON in the Push & Hold position.

NOTE: There is no "Ear to Ear" user control syncing for this option.



User Control

QUICKFIT AND FINE TUNING

- » Select QuickFit on the left navigation bar to make global fitting adjustments.
- » Select Fine Tuning on the left navigation bar or from the bottom of the QuickFit screen to make detailed fitting adjustments of individual channels and input levels.
- » Refer to the *QuickFit* and *Fine Tuning QuickTIP* for additional information.



QuickFit and Fine Tuning

ADDITIONAL ADJUSTMENTS

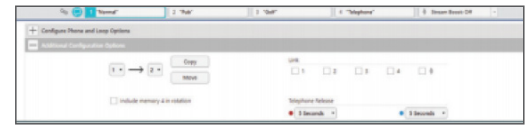
Refer to the *QuickTIP* library for information on various features, such as Environment Manager, Tinnitus, and Frequency Lowering.

MEMORIES AND SPEECH INDICATORS

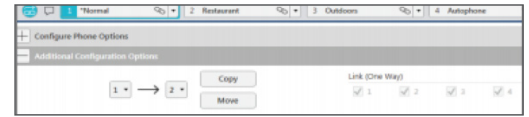
Select Memories on left navigation bar or select Memories from the middle of all fitting screens.

1. Select drop-down arrows to extend the Memories menu, then select the desired memories to program.
2. If configuring a Music Memory, refer to the *Music Memory QuickTIP*.
3. If enabling a Telephone, Autophone, Telecoil, Autocoil, or Loop Memory, select Configure Phone and Loop Options from the Memories screen. Refer to the *Phone Solutions QuickTIP* for additional information.

- Speech Indicators can be customized (see Indicators below). The memory bar will default to a display of the selected environment (for example, "Outdoors"). Select the speech bubble to change the display to the speech indicator that has been configured (for example, the Outdoors memory will display as "Golf").
- Select the link icon on the memory bar to link all memories. To link specific memories automatically to memory 1, select Preferences, then General, then enable One-way Memory Linking. When enabled, modifications to the fitting curves made in memory 1 will be applied to the linked memories, while modifications to the linked memories will not be applied to any other memories.



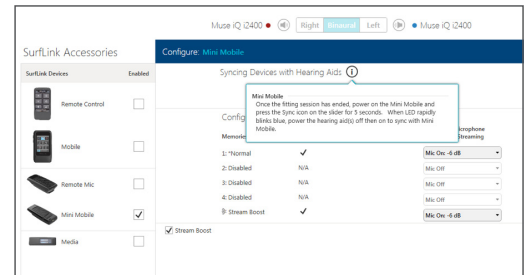
Speech Bubble



One-way Memory Linking

ACCESSORIES

Select Accessories on the left navigation bar to configure SurfLink accessories. Refer to the *SurfLink QuickTIPS* and *SurfLink Accessory Syncing to Muse iQ Rechargeable Hearing Aids QuickTIP* for additional information.



SurfLink Accessories

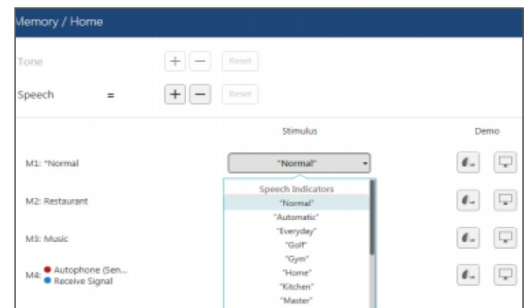
INDICATORS

Select Indicators on the left navigation bar.

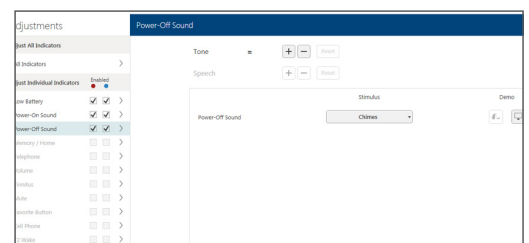
- Select or de-select check boxes to enable or disable indicators.

NOTE: Volume indicators may be enabled or disabled on an individual basis.

- Select Adjust All Indicators to increase or decrease volume level for all Tone or Speech/Chimes indicators in 5 dB increments, or to change the voice language.
- Select the Individual Indicator names to adjust the volume level and stimulus type for individual indicators, then select Play to play indicator directly through hearing aids or Demo to play indicator through loudspeaker for demonstration purposes.
- Select Power-Off Sound to adjust the volume level of the descending Chimes, then select Play to play indicator directly through hearing aids or Demo to play indicator through loudspeaker for demonstration purposes.
- Select Memory/Home to configure Speech Indicators, which are environment-specific voice indicators. As memories are enabled, the default indicator will match the selected environment (for example, the user will hear "Outdoors" when switching into the Outdoors memory). Select the drop-down arrow under Stimulus to change the speech indicator (for example, the user has the option to hear "Golf" when switching into the Outdoors memory).



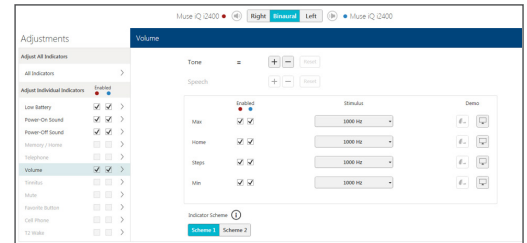
Speech Indicators



Power-Off Sound Indicator

- If enabling a volume control on hearing aids with a user control, select the desired Indicator Scheme. Select the information icon to view a description of the different indicator schemes.

NOTE: Hearing aids will default to Scheme 1.

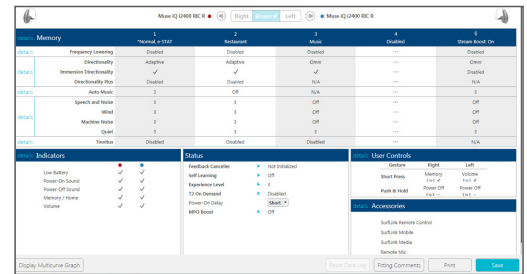


Indicator Schemes

FITTING SUMMARY

Select Fitting Summary on the left navigation bar.

- Select feature names to change the status of features, if necessary. Feature names are hyperlinks and will navigate to the adjustment screens.
- Select Print to generate a Fitting Report, a Data Log Report, or a personalized Device Guide that displays the Power Off/On instructions, volume adjustments, memories, and Speech Indicators that have been enabled.



Fitting Summary

READY.SET.HEAR

Ready.Set.Hear is a one-year triggered email program designed to help new patients successfully transition into their new hearing aids. Contact your Marketing Representative for additional information.

SYNERGY CHARGER

- Refer to the *Muse iQ Rechargeable Synergy Charger Tutorial QuickTIP* for additional information.