

Livio AI and Livio Initial Fit Protocol



For Livio® AI and Livio RIC 312, Micro RIC 312 and BTE 13 hearing aids.

Get Started

- 1 Turn Bluetooth® OFF on Apple® or Android™ device.
- 2 Launch **Inspire® X 2019.0** and insert batteries into the hearing aids.
- 3 On the **Get Started** screen, select **View Programmers**, then choose the 2.4 GHz wireless programmer and select **OK**.
NOTE: *Expected range for wireless programming is 30 feet.*
- 4 Select the **check box** next to the hearing aid(s) to be programmed.
- 5 Select **Read Device Settings** to begin a new fitting or for a follow-up fitting session using the current settings in the hearing aids or **Load a Previous Session** to retrieve a previously saved session, then select **Start**.

Initial Fit and Auto Path

Initial Fit launches automatically when programming new hearing aids.

- 1 Select the appropriate **Acoustic Options**, then select **OK**.
- 2 Select the appropriate **Experience with Amplification**.
[Fig. 1]
Refer to the Experience Manager QuickTIP for additional information.
- 3 Insert hearing aids into the patient's ears, reduce all sources of noise, then select **Begin** to run the Auto Path.
NOTE: *If hearing aid programming is conducted prior to the fitting appointment, re-run the Feedback Canceller with the hearing aids in the patient's ears.*
- 4 Review the Auto Path results screen. Select **Restart** if Status is Incomplete for any steps, or select **Close** to continue.

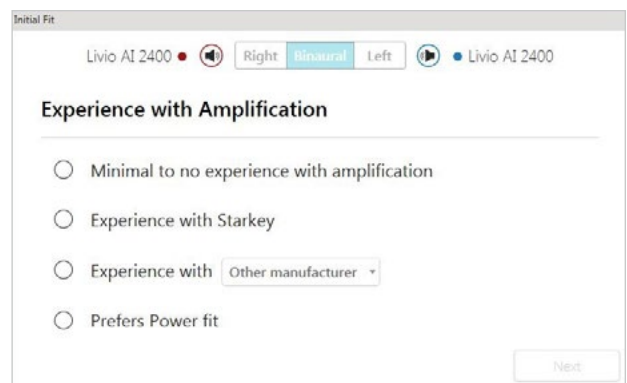


Figure 1



User Controls

The User Control Configuration demo box will appear upon initial programming. Select **Show Demo** for demonstration of user control configuration options, or select **Don't show again** and **Close**.

- 1 Drag any user control you wish to enable from the left and drop it on a **gesture** on the right. User control options include: Hearing Aid Volume, Memory, Tinnitus Level, Mute, Accessory Start/Stop, Accessory Volume, Manual Alert and Thrive Assistant. Gesture options include: Short Press, Push & Hold and Double Tap. [Fig. 2]

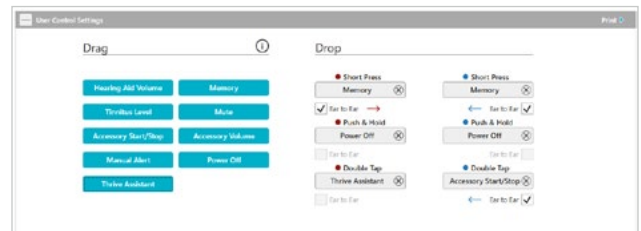


Figure 2

NOTE: Double Tap gesture as well as Manual Alert and Thrive Assistant user controls are only available for Livio AI products.

NOTE: An alert icon will appear if the tinnitus user control is enabled but the tinnitus stimulus is disabled.

- 2 Click on **VC Range and Step Size**. Select **Pins** to adjust VC Range. Select **Step Size** of 2 dB or 4 dB.

NOTE: Inspire X software will not allow for adjustments to VC Range and Step Size if volume control is not enabled in User Control Settings.

QuickFit and Fine Tuning

- 1 Select **QuickFit** on the left navigation bar to make global fitting adjustments (**Occlusion, Low Hz, Gain, High Hz, Output**). [Fig. 3]
- 2 Select the **Memory drop-down arrows** on the memory bar to program memories.
- 3 Select **Fine Tuning** on the left navigation bar or from the bottom of the QuickFit screen.
- 4 Select **Tables** or **Sliders** to choose desired view for adjustments.
- 5 Select **+** to expand **Low, Mid, High and/or Ultra** channel groups.
- 6 Select channels and input levels to adjust, then select **up and/or down** arrows to make adjustments.

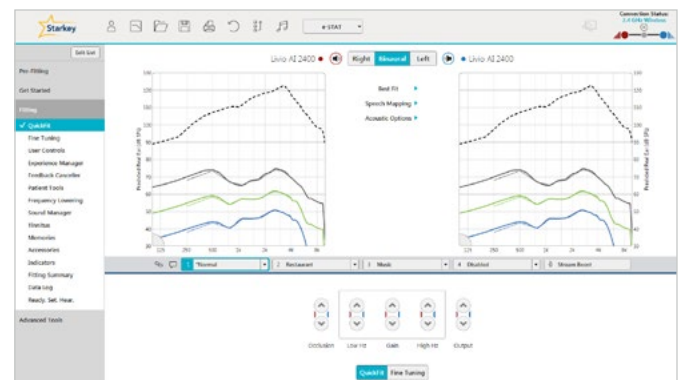


Figure 3

Self Check

- 1 Select **Patient Tools** from the left navigation bar.
 - 2 Place hearing aids on a flat surface with the receiver facing up.
 - 3 Reduce all sources of noise.
 - 4 Click **Set Baseline** to begin.
 - 5 A brief, robust stimulus will play in each hearing aid.
 - 6 A green check mark for each component indicates the baseline was established.
- Please refer to the Self Check QuickTIP for additional information.*

Additional Adjustments

Refer to the QuickTIP library for information on various features, such as Sound Manager, Tinnitus, and Frequency Lowering.

Memories and Speech Indicators

Select **Memories** on left navigation bar or select **Memories** from the middle of all fitting screens.

- 1 Select **drop-down arrows** to extend the **Memories** menu, then select the desired memories to program.
- 2 If configuring a **Music Memory**, refer to the Music Memory QuickTIP.
- 3 The memory bar will default to a display of the selected environment (for example, “Outdoors”). Select the **speech bubble** to change the display to the speech indicator that has been configured (for example, the Outdoors memory will display as “Golf”). [Fig. 4]



Figure 4

Accessories

Select **Accessories** on the left navigation bar to configure the new Starkey Hearing Technologies accessories. Click on the **information icon** for specific pairing instructions for any of the accessories. Once paired, adjust the **Hearing Aid Mic While Streaming** for the Streaming Accessories (Starkey Hearing Technologies TV, Starkey Hearing Technologies Remote Microphone + or Starkey Hearing Technologies Mini Remote Microphone) and the **Favorite Button** Configuration for the Remote. [Fig. 5]

NOTE: *Hearing Aid Mic While Streaming setting will also apply to an iOS stream.*

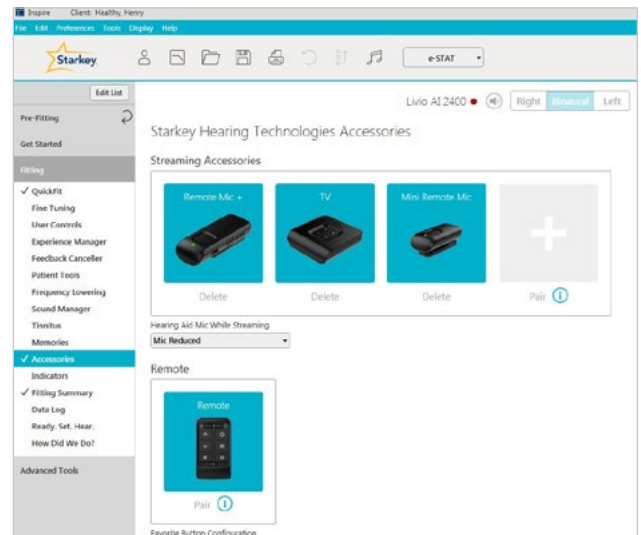


Figure 5

Indicators

Select **Indicators** on the left navigation bar.

- 1 Select or de-select **check boxes** to enable or disable indicators.
NOTE: *Volume indicators may be enabled or disabled on an individual basis.*
- 2 Select **Adjust All Indicators** to increase or decrease volume level for all Tone or Speech/Chimes indicators in 5 dB increments, or to change the voice language.
- 3 Select the **Individual Indicator names** to adjust the volume level and stimulus type for individual indicators. Select the **Hearing Aid** icon to play indicator directly through the devices or the **Computer** icon to play an indicator through the loudspeaker for demonstration purposes.

Indicators (Continued)

- Select **Memory/Home** to configure Speech Indicators, which are environment-specific voice indicators. As memories are enabled, the default indicator will match the selected environment (for example, the user will hear “Outdoors” when switching into the Outdoors memory). Select the drop-down arrow under Stimulus to change the speech indicator (for example, the user has the option to hear “Golf” when switching into the Outdoors memory.) [Fig. 6]

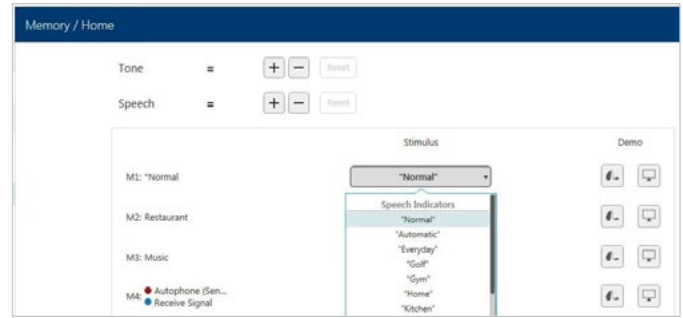


Figure 6

NOTE: The Custom and Stream Boost indicators may be disabled, if desired.

Fitting Summary

Select **Fitting Summary** on the left navigation bar. [Fig. 7]

Select **details** to change the status of features, if necessary. Details are hyperlinks and will navigate to the Feature Names adjustment screens.

Select **Remote Programming** under Status to enable remote programming. You will click the **Check Box** next to Remote Programming. Then click **Accept** after reviewing the disclosure notice with your patient. Next, click the code generator icon to generate a unique code for your patient to enter into their Thrive™ Hearing Control app to allow access for Remote Programming. [Fig. 8]

Select **Auto Fall Alert** under Status to change the Fall Detection Sensitivity and complete the Fall Risk Screening with your patient. Please refer to the Fall Alert QuickTIPs for full instructions on completing setup and use. Please note Auto Fall Alert is only available for Livio AI hearing aids. [Fig. 9]

Select **Print** to generate a Fitting Report, a Data Log report or a personalized Device Guide that displays the volume adjustments, memories and speech indicators that have been enabled. The Device Guide can be translated into several languages from the Print screen.

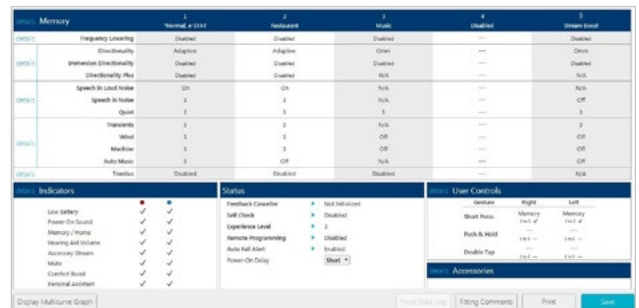


Figure 7



Figure 8

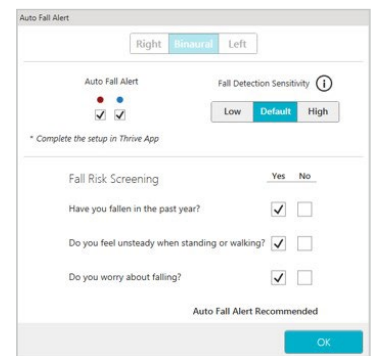


Figure 9