

TRULINK REMOTE CONTROL

PRODUCT AVAILABILITY: Halo iQ Devices

Launch **Inspire X**, then connect hearing devices. Refer to the *Halo iQ Initial Fit Protocol QuickTIPS* for additional information.

SETUP IN INSPIRE

Setup in **Inspire X** is not necessary for pairing; however, it does allow for configuration of the Favorite Button for the Advanced remote control.

1. Select the **Accessories** tab from the left navigation bar.
2. Select the check box next to **Remote Control**.
3. Select the **Favorite Button Configuration**, if using the Advanced remote control. Configuration options include:
 - » **None**
 - » **Comfort Boost:** An instantaneous, aggressive noise management setting
 - » **Jump to Memory 4**
 - » **Tinnitus On/Off**

PAIRING

The TruLink Remote Control pairs with the Halo iQ devices.

1. Ensure that the Remote Control is in the unlocked position.
2. Insert fresh batteries into the Halo iQ devices and close the battery doors. Place the devices within 12 inches of the Remote Control.
3. Press and hold the Home button on the Remote Control for 5 seconds. Both LEDs on the Remote Control will rapidly blink.
4. Once the left LED turns solid blue for two seconds and the right LED turns solid red for two seconds, both devices are paired.

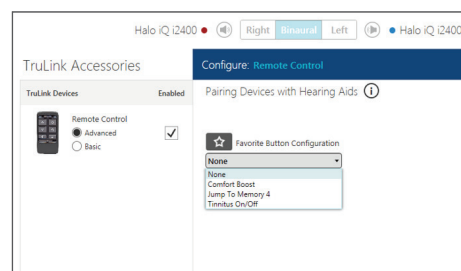
NOTE: The Remote Control will recognize if the fitting is monaural or binaural and pair one or two devices accordingly.

USE

- » **Unlock:** Unlock to make adjustments. Lock to prevent inadvertent changes and preserve battery life.
- » **Ear Selection Switch:** Keep in the center for binaural adjustments. Slide to the right or left for individual-sided adjustments.
- » **Volume:** Up arrow increases volume, down arrow decreases volume.
- » **Memory:** Cycles through all Inspire-programmed memories and the active TruLink memory.
- » **Home:** Returns hearing device to power-on volume and memory settings. Press and hold for 5 seconds to enter into Bluetooth pairing mode.
- » **Favorite Button:** Activates associated Favorite Button configuration (see above).

The TruLink Remote Control allows users to make adjustments to their Halo iQ hearing devices. It is available in Basic and Advanced configurations.

Halo iQ devices may be paired concurrently to the TruLink Remote Control and a compatible smartphone.



Accessories Screen



Advanced Remote Control