

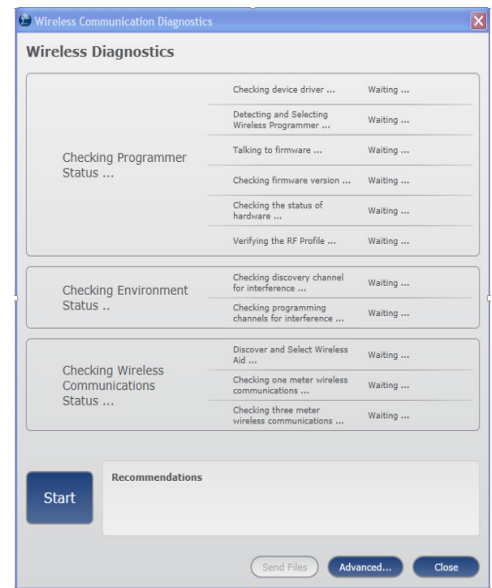
SURFLINK PROGRAMMER: WIRELESS DIAGNOSTICS

PRODUCT AVAILABILITY: Z Series, 3 Series wireless, Xino wireless, Wi Series

SURFLINK PROGRAMMER: WIRELESS DIAGNOSTICS

Used to assess the status of the programmer, the environment and wireless communications.

1. If you are in an active fitting session, your fitting session must be closed. Select **Yes** to save session.
2. With **Inspire 2015.1** open, select **Tools**, then **SurfLink Wireless Diagnostics**.
3. Select **Start** and follow the onscreen prompts to verify the status of the SurfLink Programmer, Environment and Communication between the SurfLink Programmer, and the hearing aids:
4. If an issue is detected, a RED X will appear at the location of the issue along the checklist.
5. If no issues are detected, GREEN check marks will appear. When prompted to select a device, select the check box next to the desired device.
6. When prompted to move device one meter from SurfLink programmer, move device and select **OK**.
7. When prompted to move device three meters from SurfLink programmer, move device and select **OK**.



Wireless Diagnostics Screen

WIRELESS QUALITY ASSESSMENT

Used to assess the quality of the wireless environment in fitting area.

1. Select **Advanced** to open the **Wireless Quality Assessment** screen to view the environmental interference.
NOTE: Potential sources of interference include devices that may also function/ broadcast on the 900 MHz frequency range for example, SurfLink Media (on), paging system, wireless keyboard, wireless mouse, network systems, cordless phones or security systems.
2. Turn off or remove sources of interference to look for a reduction in wireless interference via the display.
3. If desired, select **Send Files** to forward results to Starkey Hearing Technologies for analysis:
4. Enter the customer information in the text box, then select **Send Email**.
5. Select **Save to Desktop** to save the findings to your computer desktop.



Wireless Quality Assessment Screen