

## SOUNDPOINT AND SOUNDPOINT TINNITUS

**PRODUCT AVAILABILITY:** All Devices\*

\*Except Xino Classic

SoundPoint is a patient fitting and counseling tool in which professionals give patients the ability to make slight, subjective adjustments to their hearing devices during the fitting process. SoundPoint adjustments affect gain and compression ratios.

SoundPoint Tinnitus functions similarly to SoundPoint, allowing patients to make slight, subjective adjustments to the tinnitus stimulus within their hearing devices. SoundPoint Tinnitus adjustments do not influence the overall gain or frequency response of the hearing device.

SoundPoint and SoundPoint Tinnitus are patient fitting tools designed to more actively engage patients in the fitting process.

NOTE: SoundPoint is not available in the dedicated Music Memory in Synergy devices.

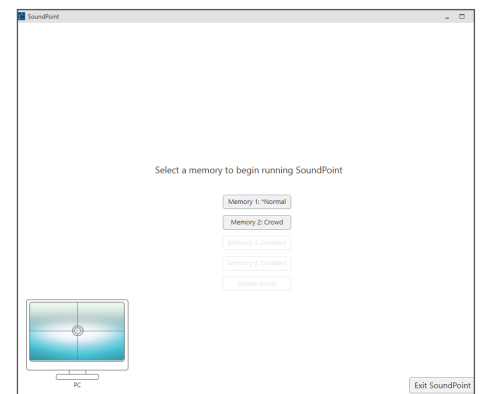
1. Launch **Inspire X**, then connect and detect hearing devices. Refer to the *Initial Fitting Protocol QuickTIPs* for more information.
2. Select **Advanced Tools** on the left navigation bar, then select **SoundPoint**.

### SOUNDPOINT

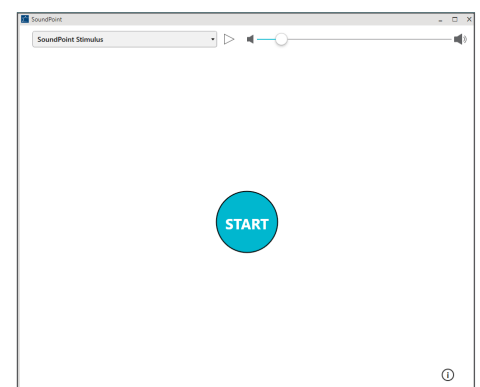
1. Select **SoundPoint**, then select either iPad or Desktop/Laptop as the desired method for using SoundPoint.  
NOTE: To use an iPad, download the most current version of the SoundPoint app on the iPad and ensure the PC and iPad are connected to the same wireless network (wireless network must support multi-cast and peer-to-peer connections). Select **Connect to Inspire** on the iPad, then select the appropriate iPad on the computer.
2. Select a memory to begin running SoundPoint.
3. Select a sound file to play from the SoundPoint Stimulus menu, then adjust the volume to a comfortable level using the volume slider.
4. Select **Start**, then give the patient the PC mouse or iPad and provide the following instructions to the patient:

“Use your mouse (Desktop/Laptop) or finger (iPad) to move around the space. Listen to your hearing devices change as you explore. Click anywhere on the space that sounds good. Your preferred spots will be marked with a pin. Mark as many preferred spots as you would like.”

5. As the patient navigates, they should hear changes to the sound quality. These changes reflect adjustments to compression ratios and gain.
6. When the patient is done navigating, the professional helps the patient compare preferred spots by moving the mouse or tapping between pins.
7. Select **Pause** to pause on the chosen pin, **Delete** to remove the pin, or **Lock** to compare the new response with the previously-programmed response.
8. Select the pin with the desired sound quality to change it to a star, then select **Yes, Save to Devices** to save settings.
9. Select **Exit SoundPoint**.



SoundPoint



SoundPoint: Start

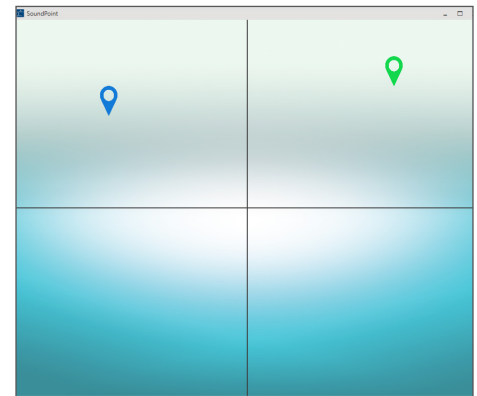
## SOUNDPOINT TINNITUS

Prior to using SoundPoint Tinnitus, refer to the *Tinnitus QuickTIP* for more information regarding programming and adjusting the tinnitus stimulus.

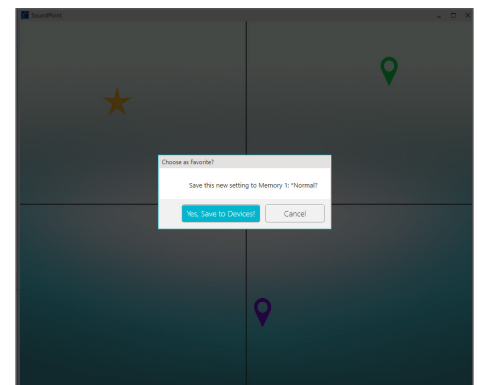
1. Select **SoundPoint Tinnitus**, then select either iPad or Desktop/Laptop as the desired method for using SoundPoint Tinnitus.  
NOTE: View instructions above under "SoundPoint" for enabling an iPad for SoundPoint and SoundPoint Tinnitus.
2. Select a memory to begin running SoundPoint Tinnitus.  
NOTE: Only memories in which the tinnitus stimulus is enabled will be available to adjust in SoundPoint Tinnitus.
3. Select **Start**, then give the patient the PC mouse or iPad and provide the following instructions to the patient:

"Use your mouse (Desktop/Laptop) or finger (iPad) to move around the space. Listen to the tinnitus stimulus in your hearing devices change as you explore. Click when you find a setting that provides relief or makes your tinnitus less noticeable or bothersome. Your preferred spots will be marked with a pin. Mark as many preferred spots as you would like."

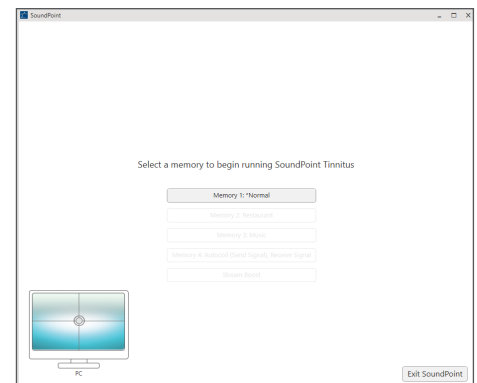
4. As the patient navigates, they should hear changes to the tinnitus stimulus.  
NOTE: These adjustments are not changing the compression ratios or gain of the frequency response.
5. When the patient is done navigating, the professional helps the patient compare preferred spots by moving the mouse or tapping between pins.
6. Select **Pause** to pause on the chosen pin, **Delete** to remove the pin, or **Lock** to compare the new response with the previously-programmed settings.
7. Select the pin with the desired sound quality to change it to a star, then select **Yes, Save to Devices** to save settings.
8. Select **Exit SoundPoint Tinnitus**.



Navigating SoundPoint



Save to Devices



SoundPoint Tinnitus